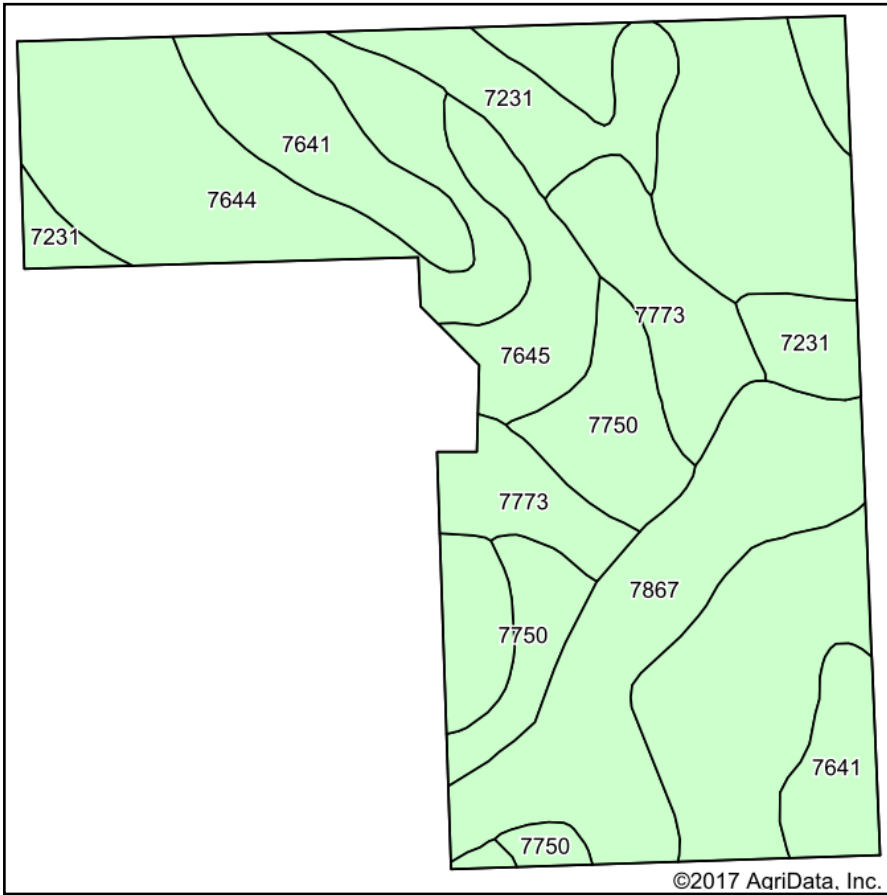
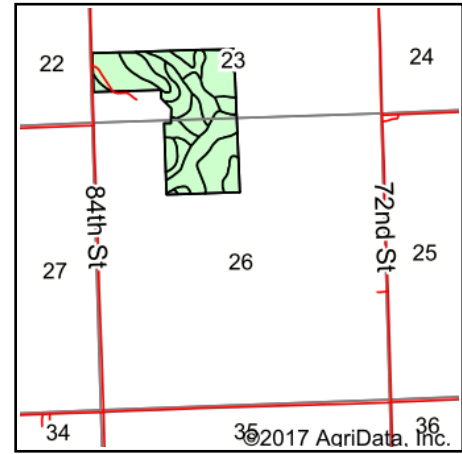


# Soils Map



Soils data provided by USDA and NRCS.



State: **Nebraska**  
 County: **Cass**  
 Location: **26-12N-12E**  
 Township: **Eight Mile Grove**  
 Acres: **101.75**  
 Date: **9/22/2017**

 **The Pinnacle Agency**  
 FARM MANAGEMENT-REAL ESTATE

Maps Provided By:  
  
 CUSTOMIZED ONLINE MAPPING  
 © AgriData, Inc. 2017 [www.AgriDataInc.com](http://www.AgriDataInc.com)



## Area Symbol: NE025, Soil Area Version: 16

Code	Soil Description	Acres	Percent of field	Non-Irr Class *c	Irr Class *c	SRPG	Alfalfa hay	Corn	Corn Irrigated	Grain sorghum	Soybeans	Soybeans Irrigated	Winter wheat
7644	Yutan silty clay loam, 6 to 11 percent slopes, eroded	43.12	42.4%	IIIe	IVe	65	3	76	94	68	26	29	27
7867	Nodaway silt loam, channeled, frequently flooded	15.37	15.1%	VIw		59		4		4	2		2
7641	Yutan silty clay loam, 2 to 6 percent slopes, eroded	10.79	10.6%	IIe	IIIe	69	3	76	94	68	26	29	27
7773	Colo-Nodaway complex, frequently flooded	9.36	9.2%	IIIw		55	5	84		80	30		35
7231	Judson silt loam, 2 to 6 percent slopes	8.95	8.8%	IIe	IIIe	79	5	117		104	42		44
7750	Nodaway silt loam, occasionally flooded	8.77	8.6%	IIw	IIw	74	5	113		104	42		37
7645	Yutan silty clay loam, 11 to 17 percent slopes, eroded	5.39	5.3%	IVe	IVe	59	3	76	94	68	26	29	27
<b>Weighted Average</b>						<b>65.3</b>	<b>3.1</b>	<b>72.7</b>	<b>54.8</b>	<b>65.7</b>	<b>25.5</b>	<b>16.9</b>	<b>26.3</b>

\*c: Using Capabilities Class Dominant Condition Aggregation Method

Soils data provided by USDA and NRCS.